



Mark II Assembly Manual Ver1.5

If you have questions that are not addressed in this manual, please email steve@eyedirect.tv

EyeDirect and EyeLiner are registered trademarks. USPat 6,044,226



For shipping and storage, place the removable mirror against the beam splitter to protect both.

(Beam splitter measurement is 349mm x 157mm x 3mm)

When unpacking, release elastic cord that holds EDISON mirror captive.

When packing, use this cord as pictured, to secure the mirror into place during travel.



When unpacking, remove EDISON mirror and cleaning cloth.

Set the mirror and cleaning cloth to the side. It is not necessary to always have the cleaning cloth in this position.

(Please be careful with any and all mirrors and glass in the EyeDirect as they are breakable. The glass should be cleaned and handled as you would a nice camera filter)



Swing open the WING. The WING will hold the EDISON mirror in place and allow for adjustment for the interviewer's site line to be comfortable.



EDISON mirror slides into the open WING and fastens in place with a 1/4x20 tie down screw



By design, the tie down screw is not to be overly torqued.

Tighten enough to hold in place, but resist tightening too much. Set unit to the side.



Determine initial desired adjustment of base place.

The base plate has multiple 3/8x16 and 1/4x20 tie down holes that are used to attach to tripods.



Once the initial adjustment has been made, use the knobs on the side of the 'traveling base' to secure the TRAVELER to the base plate SLED.



Determine if you prefer the interviewer to be on the left of the camera person... or if the camera person will be doing the interviewing themselves.

(Shown here, looking toward subject, the vertical portion of the L BRACKET will need to be on the left side to accommodate an interviewer on the right side of the camera person.)



Note the L BRACKET may be positioned further forward on the base plate to accommodate the longest lenses.... or positioned closer, to reduce the overall footprint of the unit and camera.

(Shown here, is the position for the device when the camera operator is working alone and with a long lens.)



Use the enclosed 7/32" hex head tool to secure the L BRACKET to the base plate.

The L BRACKET also has 1/2 inch adjustment, side to side. *(Initially position the side to side adjustment in the center.)*



Attach the mirror box with 1/2 inch 1/4x20 tie down knobs (included).

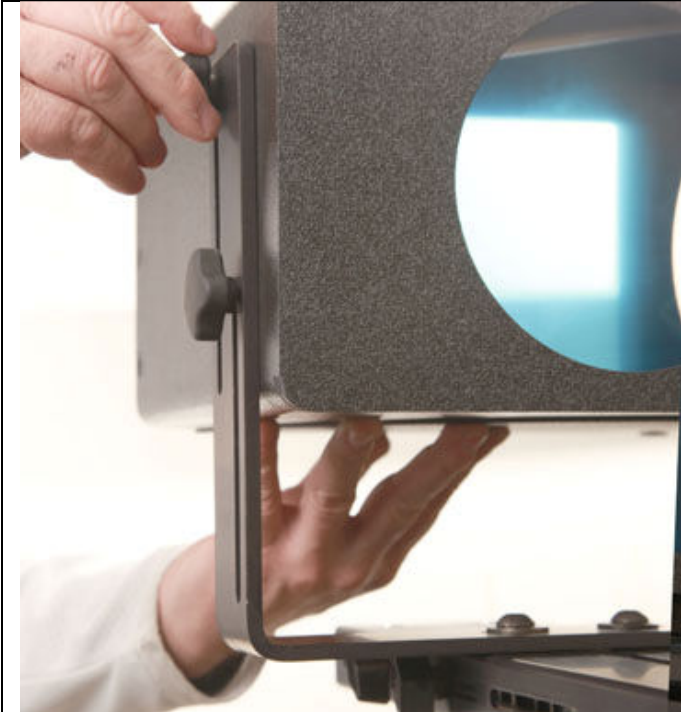
(IMPORTANT: Do not use a fastener that is longer than the enclosed 1/2 inch length... as the tip of the fastener may push through the black matte that protects the camera from recording a reflection of the end of the fastener.)



The slots in the L BRACKET allow for 4.5 inches of adjustment.



The lowest adjustment puts the optical center at 2 1/2 inches from the base plate.



The highest adjustment puts the optical center seven inches from the base plate.



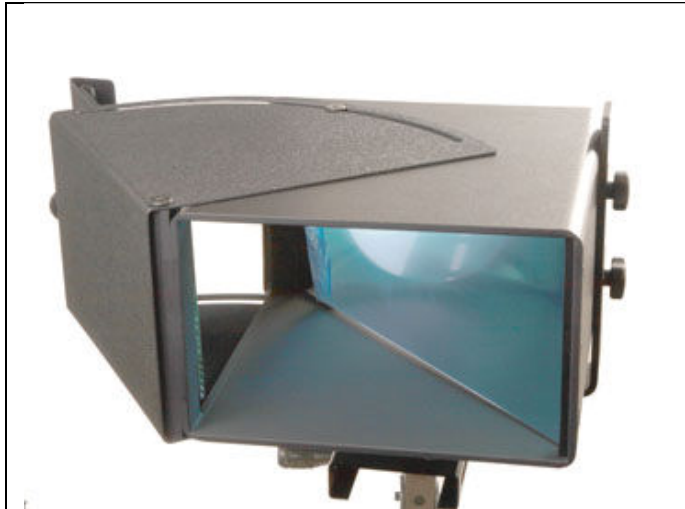
Swing the adjustable WING to best accommodate the interviewer's position for reflection.



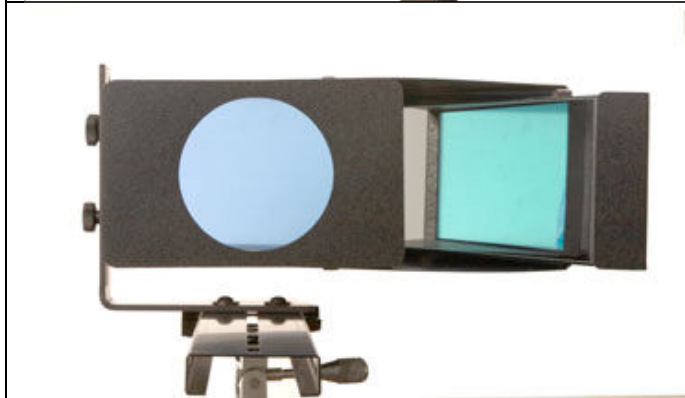
The EDISON mirror may be adjusted up or down to provide a better or more comfortable reflection angle of the interviewer.



Tighten with included 1/4x20 tie down only... as you do not want to over torque the fasteners.



The device comes with a protective plastic film on the beam splitter that must be removed before use.



Observe how the EDISON mirror may be moved up or down... and the WING adjusted... to optimize the viewing area to the subject.



Alexa with 18-100 lens



Canon C300 with 70-200 zoom

(Notice L bracket has been moved to intermediate position on base plate to make a smaller cantilever.)



Canon 5D Mark II with Zacuto finder



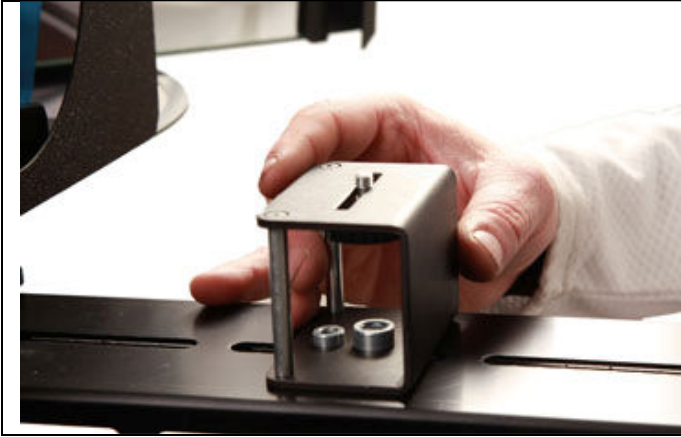
Riser

If using a small camera, like a DSLR or small video camera with the 20 inch base plate, the optional 2 inch RISER will assist in putting the camera lens at optical center of the EyeDirect.

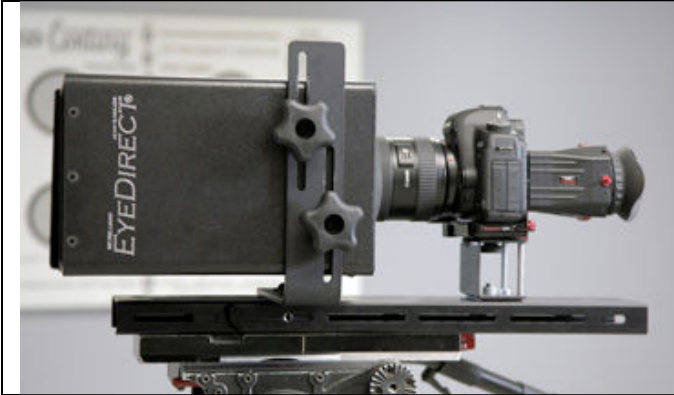
Additionally, there is left to right adjustment in the RISER to center DSLRs that have camera tie down holes that are off-optical-center.



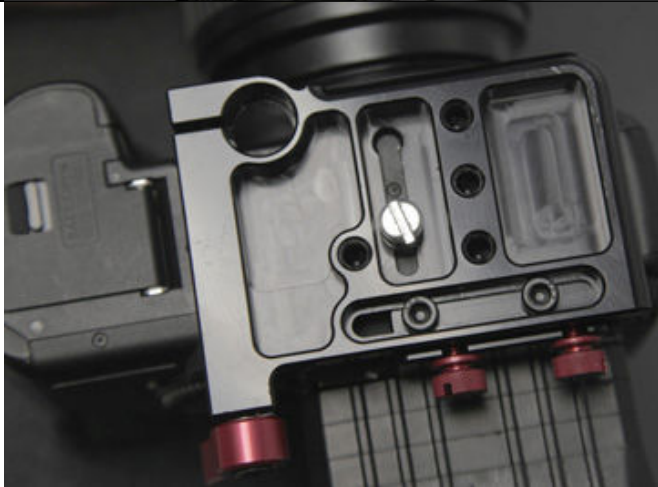
Attach RISER with either a 3/8x16 tie down screw, (recommended and included) or with a 1/4x20 tie down.



The base plate has slots that assist front to back adjustments.



Canon 5D with a Zacuto finder.



(Some products that use a camera's tie down, often 'move' the tie down hole to an offset position to accommodate that accessory.)



The 2" RISER's camera tie down fastener may be positioned left to right to solve this problem.





iPad Accessory

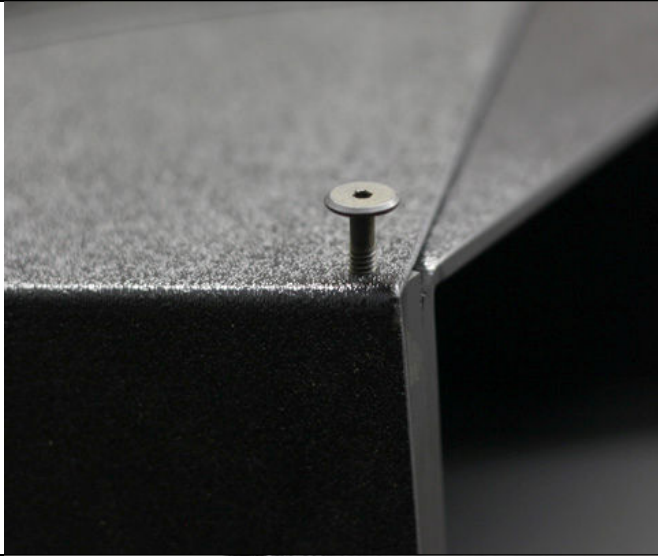
iPad Accessory is attached with hook and loop strips after the 'wing' has been removed.



Prepare to remove fasteners from wing.



Use included 5/32" hex head tool to remove 2- 1/4x20 fasteners on top and bottom of wing



... ..and 2 fasteners at top and bottom of hinge.



Attach iPad accessory securely.

IMPORTANT: The hook and loop fastening system may be undermined by dirt or debris that may be present in a shipping case. Please be confident your iPad is secure and do not install if you are not sure the iPad will remain secure during operation and camera movement.



iPad slips into accessory holder that has hook and loop strips on either side.



Once secure... and the WING is off of the Mark II... then you may attach the iPad to the EyeDirect.



... then you may attach the iPad to the EyeDirect.



Use any number of iPad teleprompter apps that may be downloaded from iTunes.



Rubber Donut

The RUBBER DONUT is used to put over the barrel of the camera lens.... and 'matte' the light that is seen by the subject between the barrel of the taking lens and the EyeDirect lens port.



Here you can see the light 'leaking' around the lense barrel and may be distracting to the subject.

As with any donut, it prevents stray light reflecting off the glass 'filter' that is in the box.



Light for Interviewer

It will be necessary to position a light for the INTERVIEWER, so the subject can see past 'the ambient shooting lights' in the room.